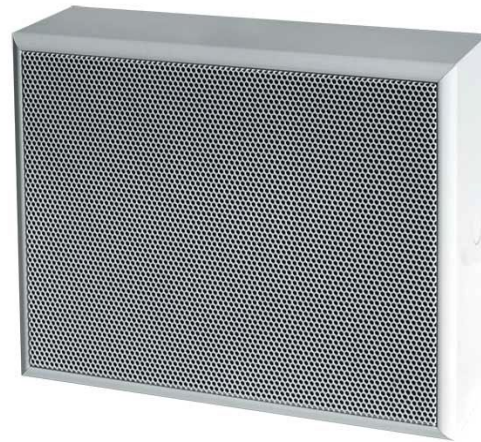




VELOX VWS-12-AB-W-EN

12W Wall Mount Speaker, Class-AB,
MDF Wood, Thermal Fuse, Certified
EN54-24



Description

The VWS-12-AB-W-EN is designed with two independent speakers and 100V transformers to enable an economic operation of two separated speaker lines (A/B-lines) for highest security demands. In case of a failure of one speaker line the redundancy of the chassis and the transformers will guarantee unimpaired function. The speaker is also compliant with the British Standard BS 5839, Part 8.

The 2x6W powered speaker is equipped with two full range loudspeakers and two 100V transformer with 3 power adjustments, each. The high-density, shock resistant MDF wood housing in white provides a low resonance sound. A sturdy front grille made of steel guarantees enduring stability. For additional reliability, a 2-pin-ceramic block, thermal fuses are provided and the speaker chassis are impregnated against wetness.

The speaker is also secured with the high protection class IP 54 against the security risks of environmental influences. The reliable spring clamp on the rear plate ensures a quick mounting on walls.

- Quick mounting
- Highest reliability
- BS 5839



Made for VELOX in Germany

Standard & Approvals

VELOX loudspeakers are tested and classified according to the IEC standard 60529 (degree of protection by enclosure) against the penetration of foreign objects and moisture.

The classification is conforming to standards through characterization with a fixed code. This code consists of the letters IP (International Protection) followed by two digits.

The first digit indicates the degree of protection against dust and the second digit the degree of protection against water. Please note that the testing of the products has been carried out in laboratory conditions which are not always 100% comparable with the conditions of different installation environments. This protection can be reduced due to normal wear and tear depending on the installation environment.

RoHS compliant (2011/65/EU)

The IP rating specified is based on VELOX test results, not on CNBOP-PIB test results. Certification only verifies the minimum requirements for EN54-24 compliance.

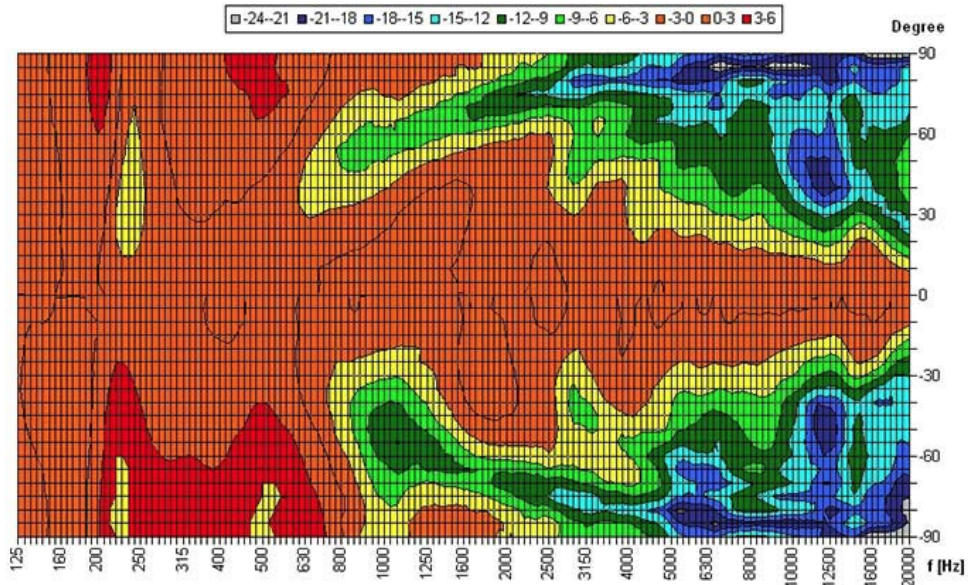


EN 54-24:2008
Ref. Nr.: 018-15
ID-Code: SAA-LS18
xxx-CPR-xxxx

Polar Diagrams

Copyright by Four-Audio GmbH & Co KG Licensed

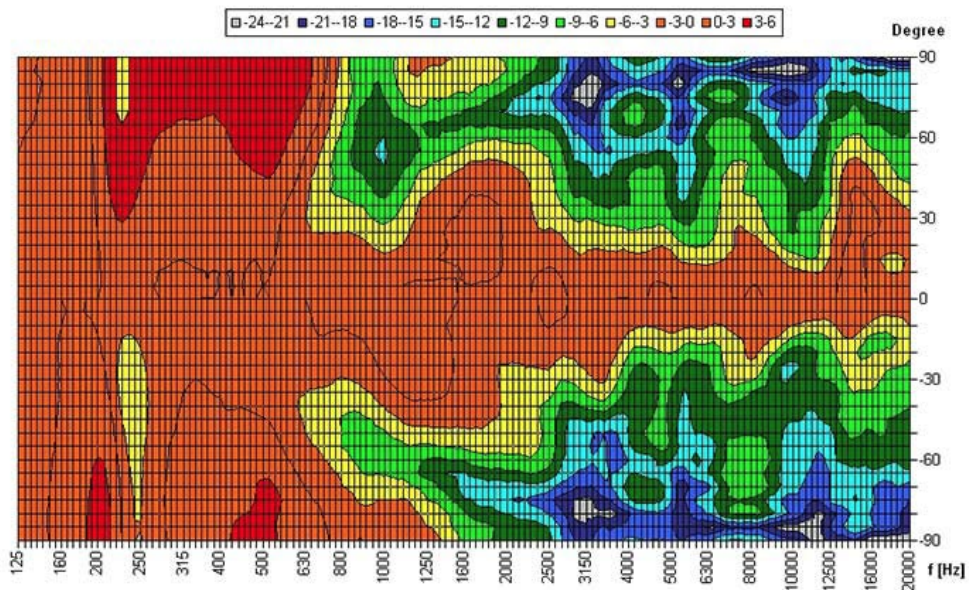
Horizontal Isobars single



Parameters: Cyclic Move: 0° ; Symmetry: no symmetry ; Freq.Smooth: 1/3 Oct ; Ang.Resol.: 5° ; Rel. to: 0° Axis 0°

Copyright by Four-Audio GmbH & Co KG Licensed

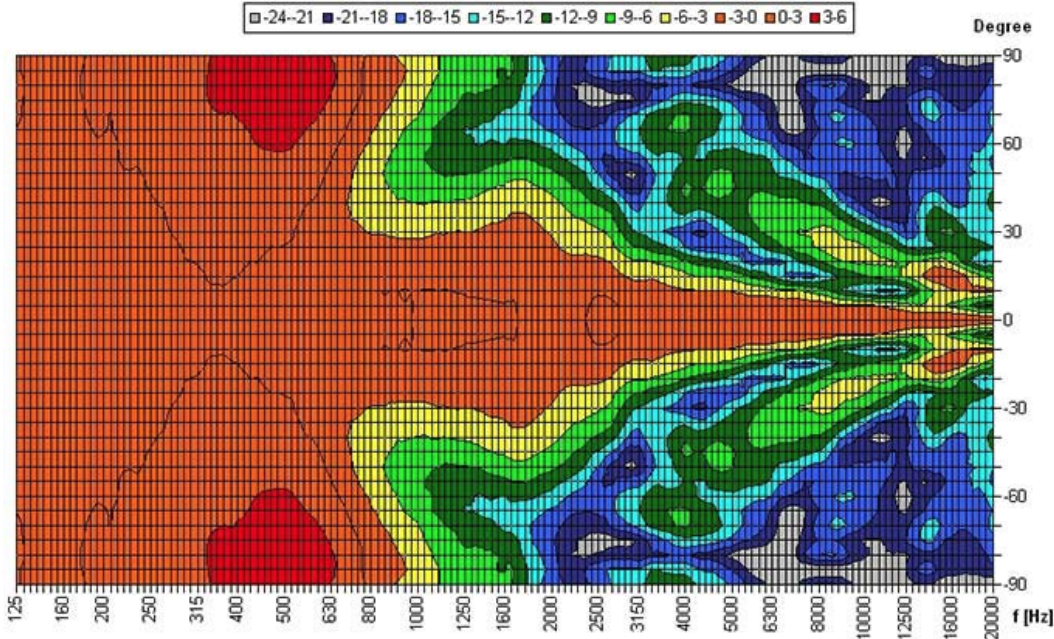
Vertical Isobars single



Parameters: Cyclic Move: 0° ; Symmetry: no symmetry ; Freq.Smooth: 1/3 Oct ; Ang.Resol.: 5° ; Rel. to: 0° Axis 0°

Copyright by Four-Audio GmbH & Co KG Licensed to AAC

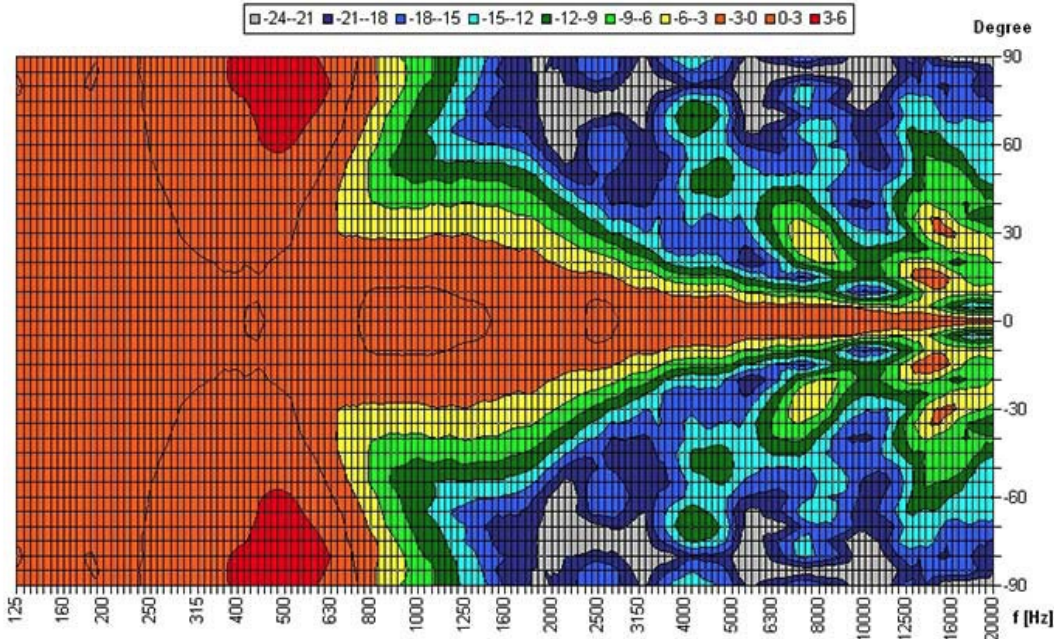
Horizontal Isobars double



Parameters: Cyclic Move: 0° ; Symmetry: 0..+180 sym ; Freq.Smooth: 1/3 Oct ; Ang.Resol.: 5° ; Rel. to: 0° Axis 0°

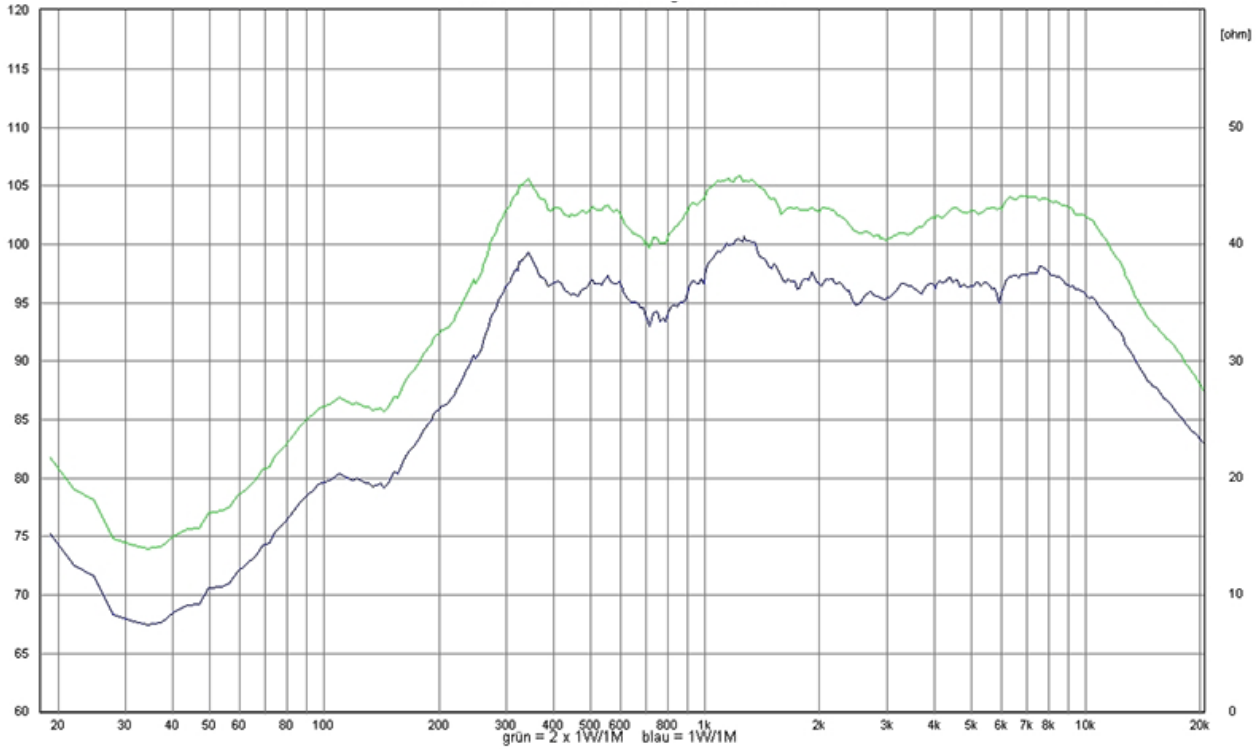
Copyright by Four-Audio GmbH & Co KG Licensed to AAC

Vertical Isobars double

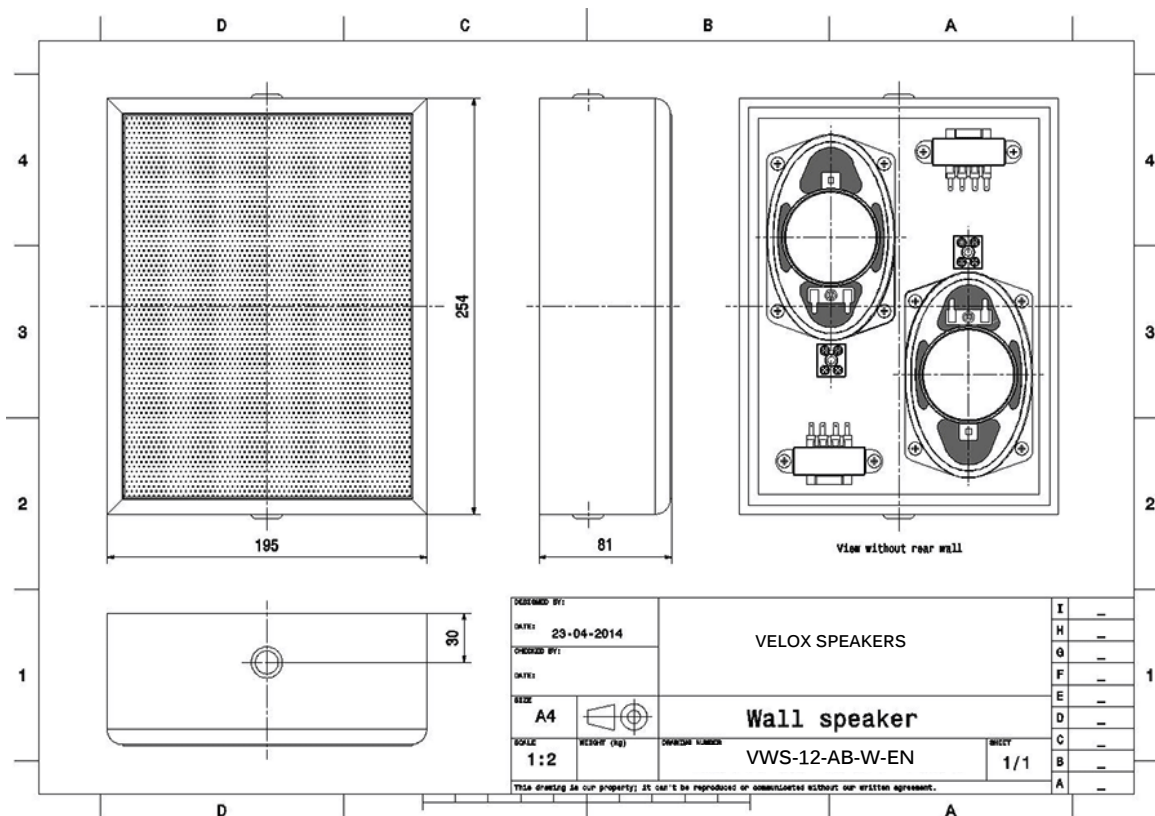


Parameters: Cyclic Move: 0° ; Symmetry: 0..+180 sym ; Freq.Smooth: 1/3 Oct ; Ang.Resol.: 5° ; Rel. to: 0° Axis 0°

Frequency Response Diagrams



Technical Diagrams



Technical Data (Electrical)

Feature	Description
Power	2x 6/3/1,5 W
Impedance (100V)	2 x 1667/3333/6667 ohm
Frequency Range	227 - 14.600 Hz (single) 224 - 14.300 Hz (double)
Frequency Response	165 - 23.500 Hz (single) 162 - 23.500 Hz (double)
SPL 1W/1m, peak	100,7 dB (single) 105,9 dB (double)
SPL , 1W/4m, peak	88,7 dB (single) 93,9 dB (double)
SPL Pmax/4m, peak	96,4 dB (single) 101,6 dB (double)
SPL, rated noise power / 4m	85,0 dB (single) 88,0 dB (double)
Sensitivity EN54-24, 1W/4m	79,6 dB
Sensitivity EN54-24, 1W/1m	91,6 dB
Dispersion -6dB, 500Hz	single h/v 175° double h/v 180°
Dispersion -6dB, 1KHz	single h/v 180°/160° double h/v 145°/130°
Dispersion -6dB, 2KHz	single h/v 150°/135° double h/v 90°/80°
Dispersion -6dB, 4KHz	single h/v 105°/90° double h/v 50°/40°

Technical Data (Mechanical)

Feature	Description
Dimensions	252x194x82 mm
IP Rating	IP54
Weight (net)	2,24 kg
Temperature range	-10 / +55 C°
Mounting	spring clamp
Connector	2-pin ceramic block
Maximum cable cross section	8mm ² (single)
Max. cable cross section loop	2x2mm ² (single)
Colour	white

Order code

Part No.	Description
VWS-12-AB-W-EN	12W Wall Mount Speaker, Class-AB, MDF Wood, Thermal Fuse, Certified EN54-24