

VELOX VCS800-60-EN

8" 60W Bassreflex-ceiling speaker,
2-way-system



Description

The 60W powered speaker is equipped with a 200mm 2-way bass reflex system featuring a neodymium tweeter and a 100V transformer with 4 power adjustments. The speaker offers very high sound quality. Low impedance operation is also possible.

The sturdy metal housing in RAL 9016 guarantees long-term durability. A strain relief fitting provides additional reliability.

Protection class IP 21C secures the speaker against the risks of environmental influences. The speaker chassis is impregnated against wetness. Easy installation via screw mounting system.

Thanks to modern 2-way technology it is especially suitable for installations where high sound quality is demanded.

- Bass reflex
- Quick mounting
- Sturdy metal housing



Made for VELOX in Germany

Standard & Approvals

VELOX loudspeakers are tested and classified according to the IEC standard 60529 (degree of protection by enclosure) against the penetration of foreign objects and moisture.

The classification is conforming to standards through characterization with a fixed code. This code consists of the letters IP (International Protection) followed by two digits.

The first digit indicates the degree of protection against dust and the second digit the degree of protection against water. Please note that the testing of the products has been carried out in laboratory conditions which are not always 100% comparable with the conditions of different installation environments. This protection can be reduced due to normal wear and tear depending on the installation environment.

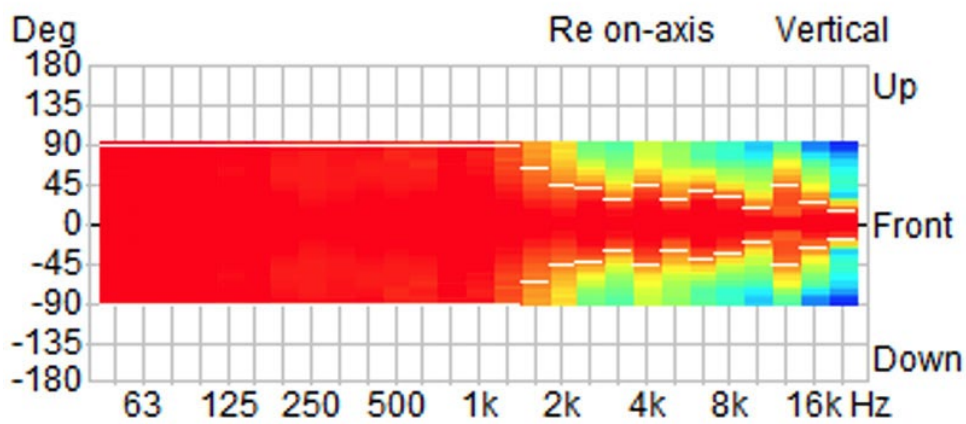
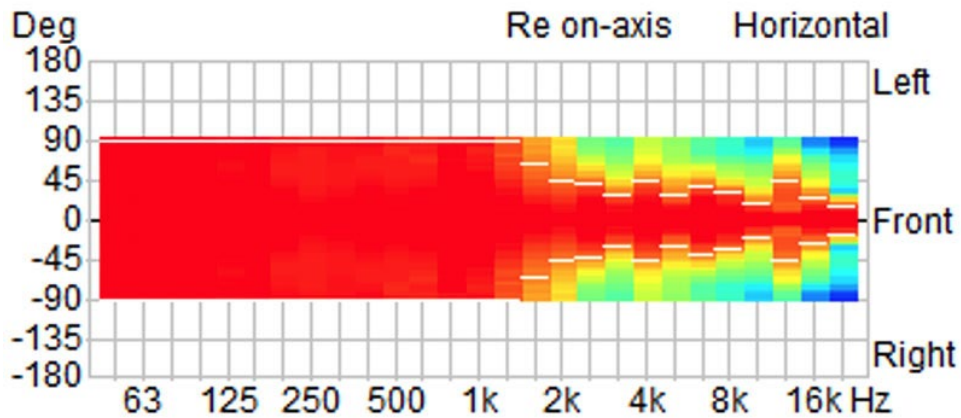
RoHS compliant (2011/65/EU)

The IP rating specified is based on VELOX test results, not on CNBOP-PIB test results. Certification only verifies the minimum requirements for EN54-24 compliance.

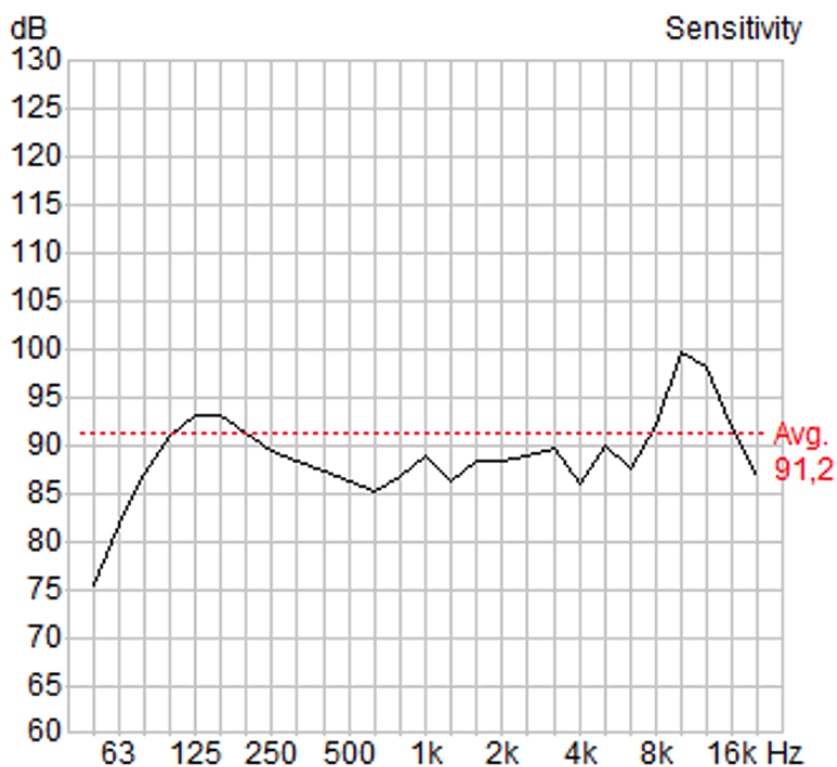


EN 54-24:2008
Ref. Nr.: 008-19
ID-Code: SAA-LS08
xxx-CPR-xxxx

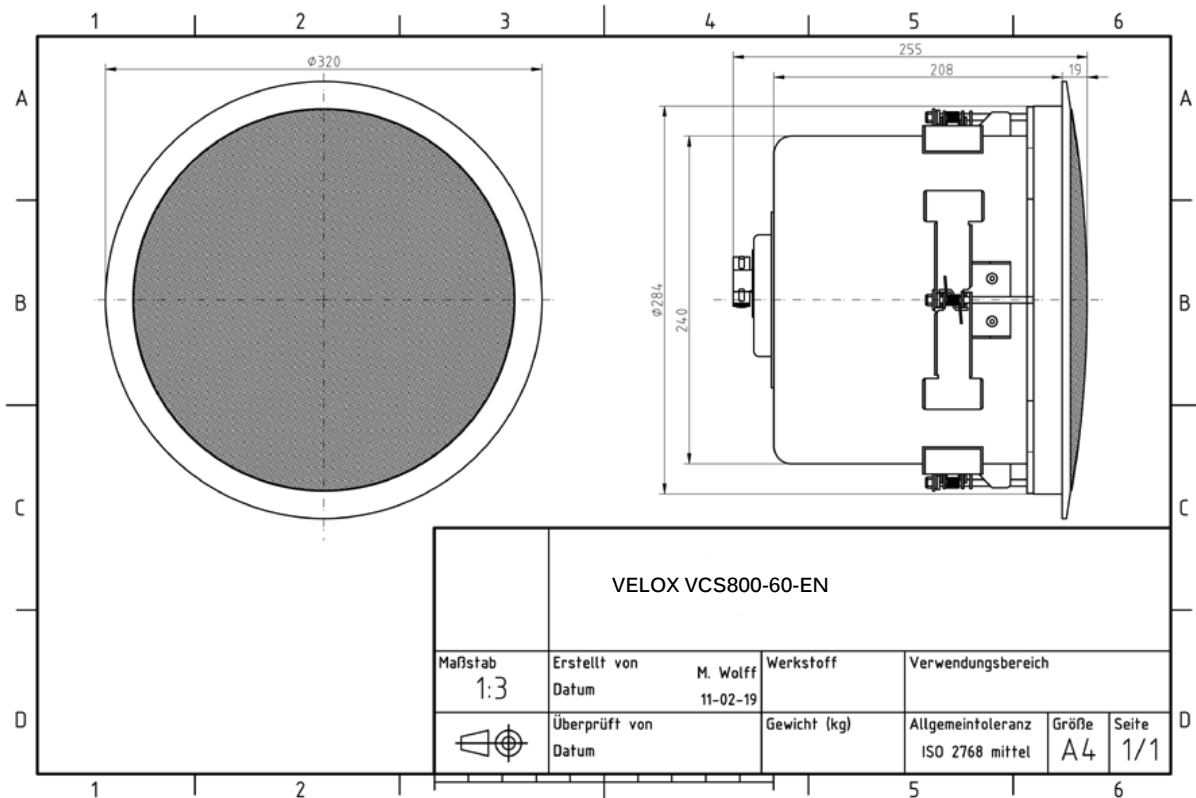
Polar Diagrams



Frequency Response Diagrams



Technical Diagrams



Technical Data (Electrical)

Feature	Description
Power	60/30/15/7,5 (8) W
Impedance (100V)	167/333/667/1333 ohm
Frequency Range	63 - 22.200 Hz
Frequency Response	50 - 24.000 Hz
SPL 1W/1m, peak	93,0 dB
SPL , 1W/4m, peak	81,0 dB
SPL Pmax/4m, peak	98,7 dB
SPL, rated noise power / 4m	94,9 dB
Sensitivity EN54-24, 1W/4m	79,2 dB
Sensitivity EN54-24, 1W/1m	91,2 dB
Dispersion -6dB, 500Hz	h/v 180°
Dispersion -6dB, 1KHz	h/v 165°
Dispersion -6dB, 2KHz	h/v 130°
Dispersion -6dB, 4KHz	h/v 80°

Technical Data (Mechanical)

Feature	Description
Dimensions	319 x 254 mm
IP Rating	IP21
Weight (net)	4,7 kg
Ceiling Cut-out	302 mm
Temperature range	-10 / +55 C°
Mounting	Quick-mount clamps
Connector	4-pin screw terminal
Maximum cable cross section	4,9mm ²
Max. cable cross section loop	2x4,9mm ²
Colour	RAL 9016

Part No.	Description
VCS800-60-EN	8" 60W Bassreflex-ceiling speaker, 2-way-system, 60 watts (100V & 8ohms), RAL 9016, Metal, with thermal fuse, certified EN 54-24, IP21C