

## VELOX BCL3T/EN

Splash Proof Ceiling speaker, 6 watts (100V & 8ohms), with thermal fuse and ceramic block.



### Description

The BCL3T/EN is a splash-proof Speaker which is perfect for the installation in bathrooms, pool areas, e.g. The 6W powered speaker is equipped with a 100mm full-range loudspeaker and a 100V transformer with 3 power adjustments. The powder coated metal in RAL 9016 guarantees longterm stability.

The speaker is secured with protection class IP 54 against the risks of environmental influences. For additional reliability the speaker is impregnated against wetness. Fast and easy installation by WAGO 221 connector and strong spring clamps with protective caps for vibration damping. The connecting cables can be supplied by rubber grommets in the firedome.

Special paint of the speaker in 4-digit RAL- or NCS- colour available at extra cost. The firedome is included in the delivery.

This speaker is suitable for a ceiling strength of about 1 – 45 mm. Our specification is primarily related to solid ceilings, for ceilings with soft materials a higher ceiling thicknesses could be necessary. In addition, stronger cables and other fittings may also result in changes of the appropriate setup. With regard to the variety of materials and manufacturers, we recommend to build in a sample of the speaker to match the requirements accurately.

- splash-proof
- frameless design
- WAGO connector 221



### Standard & Approvals

VELOX loudspeakers are tested and classified according to the IEC standard 60529 (degree of protection by enclosure) against the penetration of foreign objects and moisture.

The classification is conforming to standards through characterization with a fixed code. This code consists of the letters IP (Ingress Protection) followed by two digits.

The first digit indicates the degree of protection against dust and the second digit the degree of protection against water. Please note that the testing of the products has been carried out in laboratory conditions which are not always 100% comparable with the conditions of different installation environments. This protection can be reduced due to normal wear and tear depending on the installation environment.

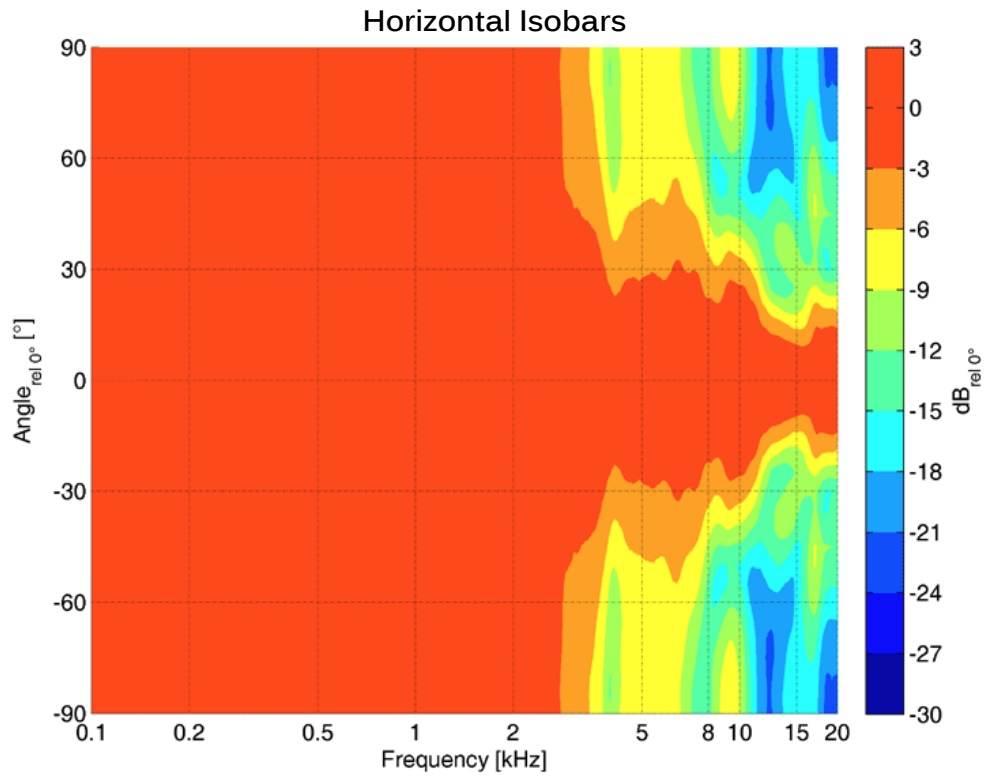
RoHS compliant (2011/65/EU)

The IP rating specified is based on VELOX test results, not on CNBOP-PIB test results.

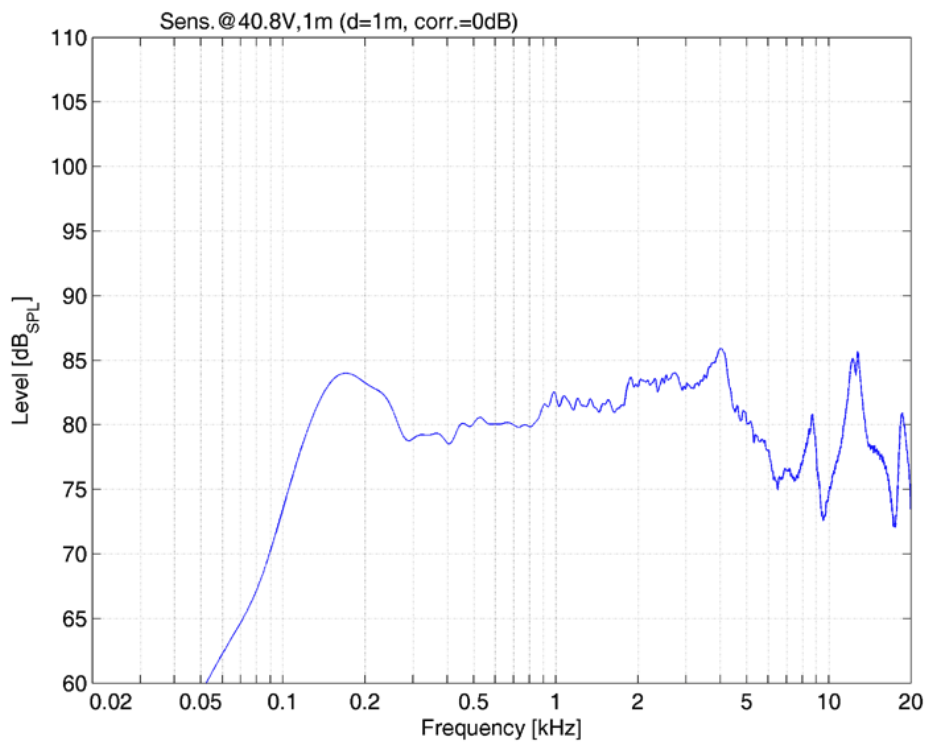


EN54-24 Compliant, Approval in Process.

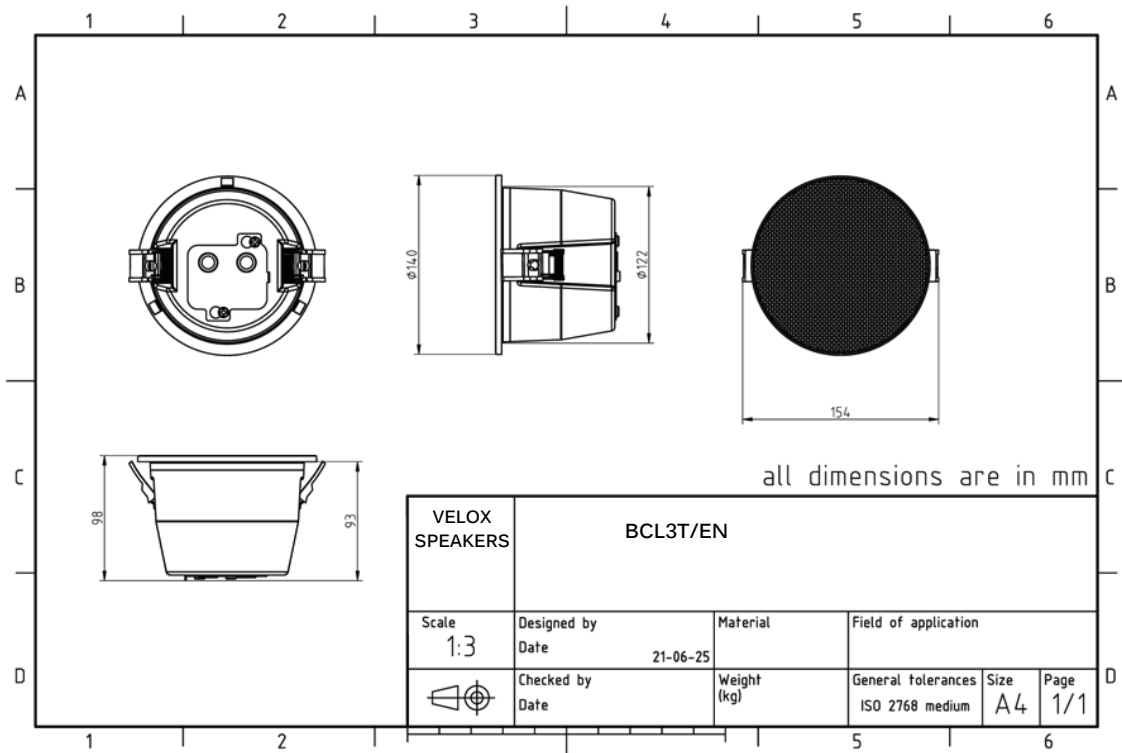
Polar Diagrams



Frequency Response Diagrams



Technical Diagrams



Technical Data (Electrical)

Feature	Description
Power	6/3/1,5 W
Impedance (100V)	1667/3333/6667 ohm
Frequency Range	98 - 20.000 Hz
Frequency Response	93 - 20.100 Hz
SPL 1W/1m, peak	84,7 dB
SPL , 1W/4m, peak	72,7 dB
SPL Pmax/4m, peak	80,4 dB
SPL, rated noise power / 4m	79,1 dB
Sensitivity EN54-24, 1W/4m	68,5 dB
Sensitivity EN54-24, 1W/1m	80,5 dB
Dispersion -6dB, 500Hz	h/v 180°
Dispersion -6dB, 1KHz	h/v 180°
Dispersion -6dB, 2KHz	h/v 180°
Dispersion -6dB, 4KHz	h/v 81°

**Technical Data (Mechanical)**

Feature	Description
Dimensions	140x98 mm
IP Rating	IP54
Weight (net)	0,75 kg
Ceiling Cut-out	129 mm
Temperature range	-10 / +55 C°
Mounting	Quick fit mounting
Connector	WAGO 221 connector
Maximum cable cross section	4mm <sup>2</sup>
Max. cable cross section loop	4mm <sup>2</sup>
Colour	RAL 9016

**Order code**

Part No.	Description
BCL3T/EN	Splash Proof Ceiling speaker, 6 watts (100V & 8ohms), RAL 9016, ABS (UL 94-V0), with thermal fuse and ceramic block,